

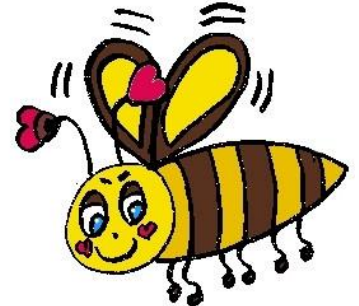
## Spelling Bee Coach Duties



- Sign-in to [spellingbee.com](http://spellingbee.com) to access word lists and classroom/school guides.



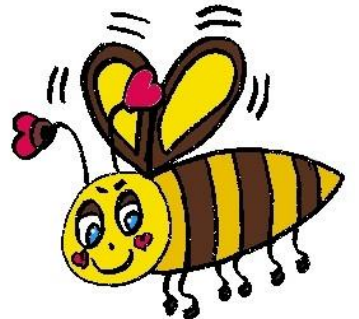
- Watch the videos and use the resources available at [spellingbee.com](http://spellingbee.com).



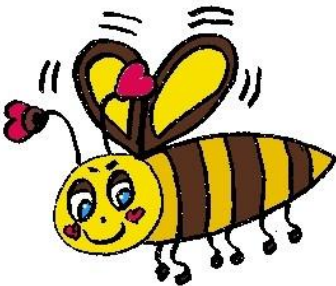
- Carefully review and follow the guidelines for the spelling bee, and explain the rules of the competition to the students.



- Teach students strategies for learning how to spell new words (recognizing word parts, asking for the definition, etc.).



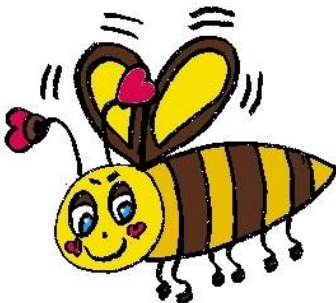
- Play spelling games using the words from the word lists and spelling bee guidebooks.



- Prepare word list packets for the students to practice from school and home.



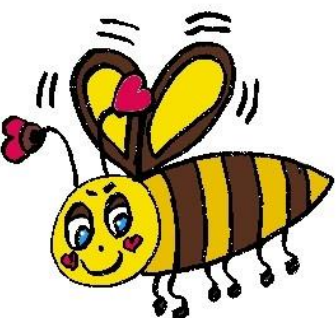
- Download the spelling app recommended by Scripps at [spellingbee.com](http://spellingbee.com). (ipads may work well for this).



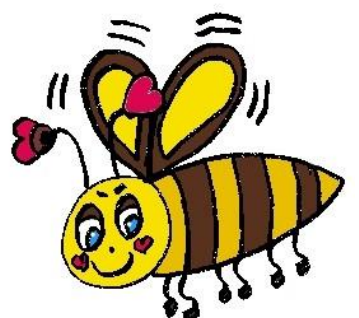
- Hold mini spelling bee competitions to practice and prepare for the online qualifier test or County Spelling Bee.



- Submit all required paperwork on time to register for the online qualifier test or County Spelling Bee.



- Set aside a time and quiet location for your school champion to take the online qualifier test.



- Provide additional support to students advancing to the Kern County Spelling Bee.